



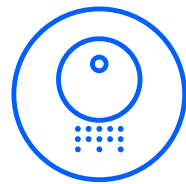
EZVIZ RE5 Plus
Robot Vacuum & Mop Combo

***Elevated & simplified cleaning,
now with auto-emptying***



Featuring vacuum & mop design in one device, the RE5 Plus is the go-to option to spare you from tedious, repetitive, and back-aching cleaning routines. It delivers industry-leading 4,000 Pa suction power, large water tank, and smart navigation to thoroughly boost whole-home cleaning. The all-around charging dock automatically collects and seals dust, providing hands-off vacuuming for up to 90 days. Enjoy easy control and personalized cleaning - the most efficient way to clean your home - with the EZVIZ App.

Key Features



Automatic
Dustbin Emptying
from the Robot



Up to 90 Days¹
Without Emptying
the Dock's Dust Bag



LDS LiDAR
Navigation & Route
Planning



Obstacle
Avoidance



Drop-Sensing
Technology



Carpet Detection



Suction Power
Up to 4000 Pa



Self-Returning &
Charging at the Dock



Remote App Control &
Map Customization



Smart Integration
with Google Assistant
& Amazon Alexa²

Clean often, empty rarely

Simply swap out the full 4L dustbag every 90 days, rather than emptying the robot's dustbin manually after every cleaning mission.



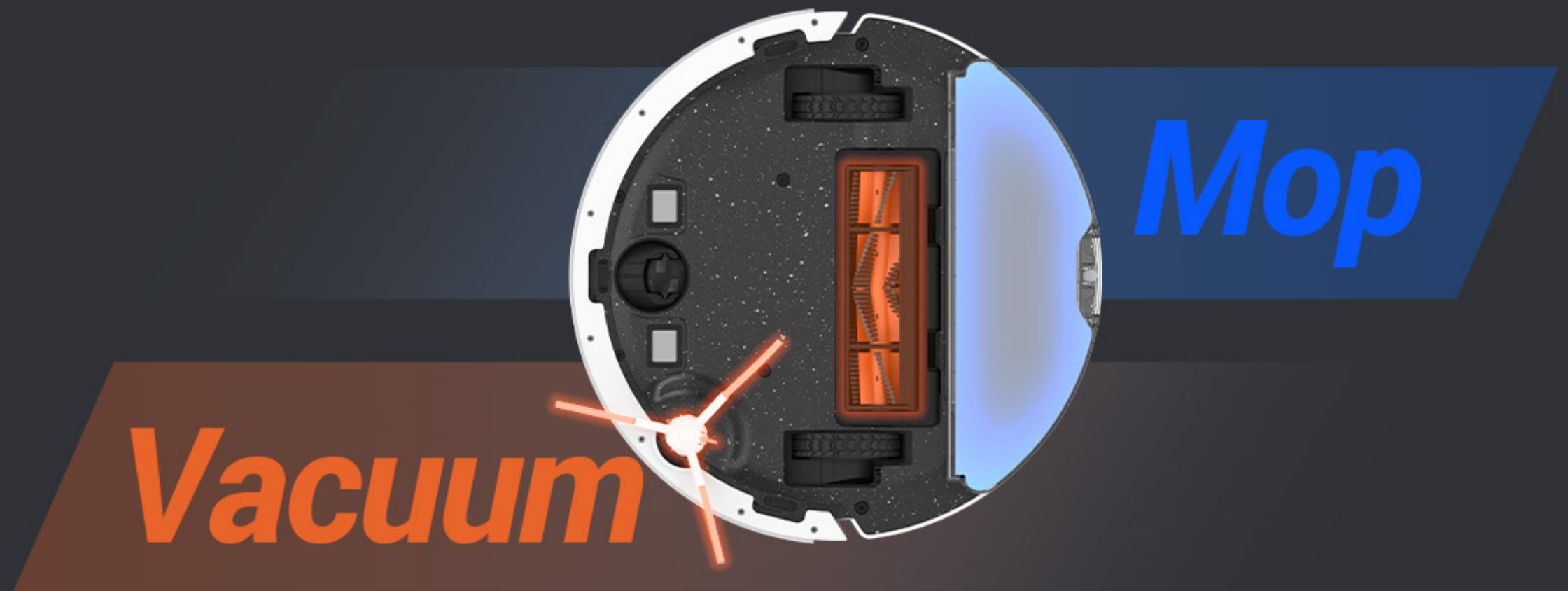
The vacuum's dustbin empties effectively with powerful suction and a large dust bag



Dust leaks during bag removal are prevented thanks to the self-sealed design

Dual power for worry-free cleaning

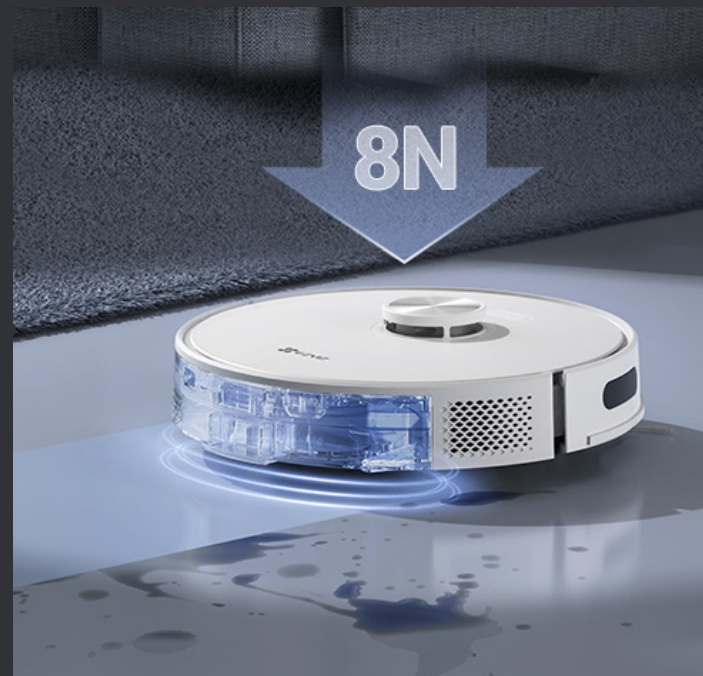
Let the RE5 Plus take on the daily cleaning for you. It efficiently sweeps, vacuums, and mops your whole home to prevent dirt, dust, and other debris from building up. Enjoy your leisure time while this powerful robot vac removes even stubborn stains off the floor.



Designed for powerful, in-depth cleaning

Ultra-Strong Suction Power To Absorb Dry Debris

Built to present spotless floors to homeowners, the RE5 Plus effectively removes dust, pet dander, and hard-to-collect debris in a flash.

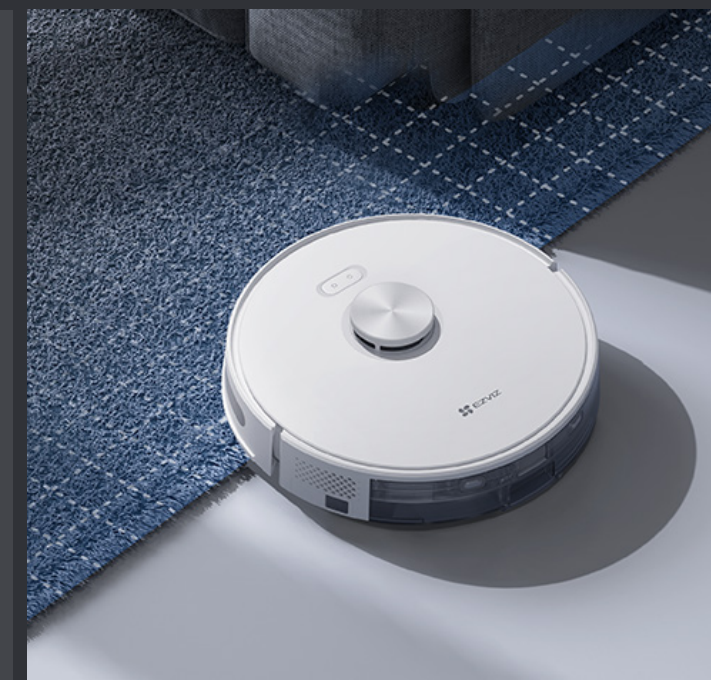


Consistent Mop Pressure To Sanitize Floor

The robot boasts a 300ml clean water tank for thorough, whole-home cleaning. You can adjust the water level to match any type of floor or mess.

Automatically Boosted Suction To Clean Carpets

To pull dust and hair up from carpets, the RE5 Plus automatically increases its suction power after detecting a carpeted area.



Navigate your home in a smart way

Featuring LDS LiDAR and infrared detectors, the RE5 Plus strategically avoids obstacles and plans the most effective cleaning route in even complex environments.

Carpet
Detection

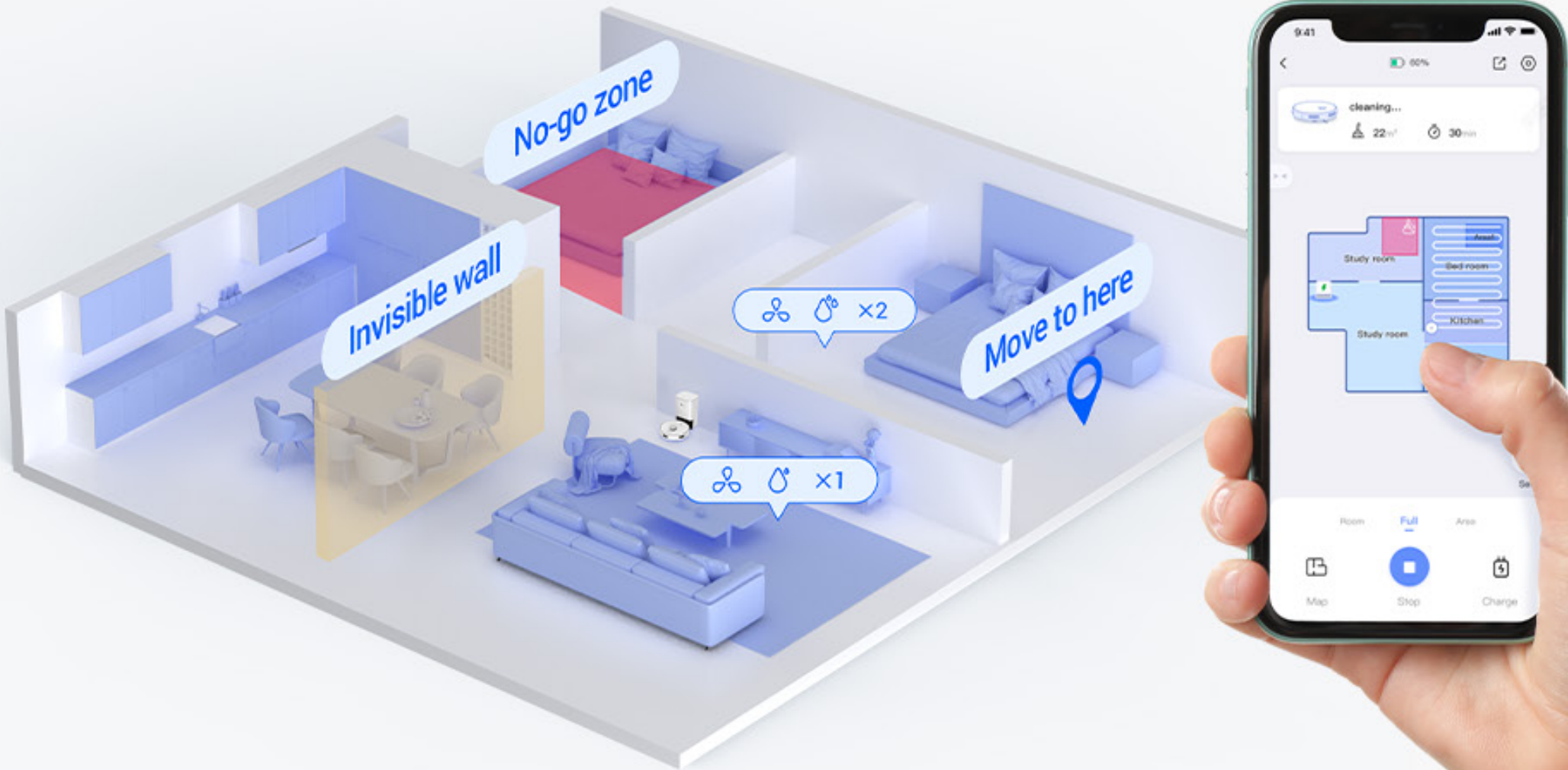
Drop-Sensing
Technology

Obstacle
Avoidance

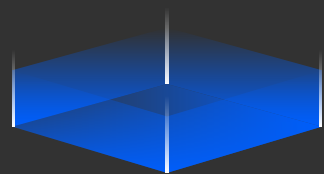
Obstacle
Crossing

Customize home cleaning with ease

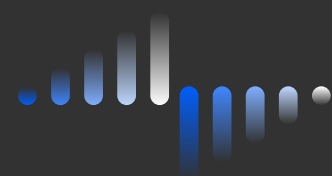
In addition to quickly mapping out your home, the RE5 Plus also smartly adapts to everyday changes, delivering tailored cleaning experience for every home. Using EZVIZ App, you can customize floor plans easily for different areas and rooms, or set up cleaning missions for the whole home.



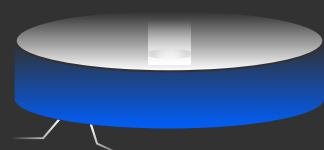
More to fit your cozy home



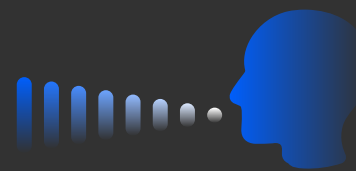
Extended runtime
covers up to **300 m²**
with one full charge³



low noise level
during operation⁴



TPE plastic
minimizes bumping
damage



Hands-free control
via third-party
voice assistants



Alexa, turn on the RE5 Plus.



Create cleaner homes on a greener earth

01 Reuse recycled materials

With sustainability in mind, EZVIZ uses recycled materials – an amount that equals about 16 plastic water bottles – on the RE5 Plus's back plate, helping reduce plastic pollution and give used materials a second life.



02 Grow greenness with the RE5 Plus

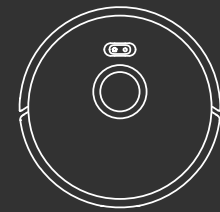
With revenues from the RE5 Plus, EZVIZ is giving back to the planet - planting trees and empowering local farms via our dedicated EZVIZ Global Forest Plan. On average, we plant two trees a day with our green partner Treedom, a global leading tree-planting platform.

[Learn More](#)

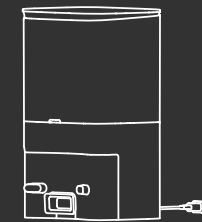


In the Box

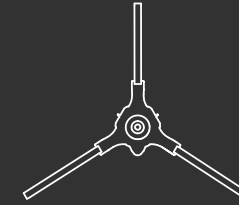
- ① RE5 Plus Robot Vacuum Cleaner ×1
- ② Auto-empty Base ×1
- ③ Side Brush ×2
- ④ Mop Assembly ×1
- ⑤ Mop ×1
- ⑥ Dust Bag ×2
- ⑦ High Efficiency Filter ×2
- ⑧ Cleaning Tool ×1
- ⑨ Quick Start Guide ×2
- ⑩ Regulatory Information ×1



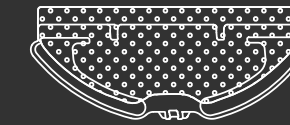
①



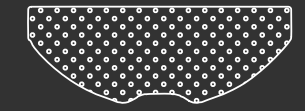
②



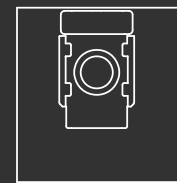
③



④



⑤



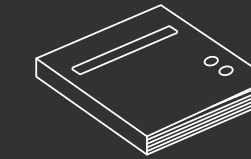
⑥



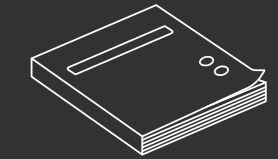
⑦



⑧



⑨



⑩

*A side brush, a dust bag, and a filter are already pre-assembled in the RE5 Plus.

1 Data from EZVIZ Lab test results based on the regular use of the robot. Actual emptying interval may vary depending on the use habits and environmental factors.

2 Google Assistant is not available in certain languages and countries.

3 Data from EZVIZ Lab test results under standard conditions. Actual battery life may vary due to the robot's battery status, dirt level and other environmental factors.

4 Data from EZVIZ Lab test results under standard conditions, when the Standard Mode is enabled. Actual noise level may vary due to the robot's working modes and environmental factors.

Specifications CS-RE5P

Navigation

| | |
|----------------------|--------------------|
| Navigation & Mapping | LDS LiDAR |
| Obstacle Avoidance | Infrared Detectors |

Cleaning Features

| | |
|-------------------|---|
| Cleaning Features | Full-house Cleaning Room Cleaning Area Cleaning |
| Suitable Area | Up to 300 m ² |
| Edge Detection | Supports |

Vacuuming

| | |
|---------------------------|-----------------|
| Maximum Suction Power | 4000 Pa |
| Suction Level Adjustment | 4 level |
| Motor | Brushless Motor |
| Carpet Detection | Supports |
| Main Brush Pressure Boost | Supports |

Mopping

| | |
|------------------------|----------|
| Water Level Adjustment | 3 level |
| Water Tank Capacity | 300 mL |
| Water Shortage Alert | Supports |
| Water Refill | Manual |
| Mop | Washable |

Runtime

| | |
|------------------|---|
| Battery Capacity | Li-ion 4930 mAh |
| Charging Time | 5 h |
| Working Time | 240 min (Quiet Mode) 180 min (Standard Mode) |

Robot

| | |
|--------------------------|---------------------------------|
| Robot Rated Power | 45 W |
| Robot Working Voltage | 14.76 V |
| Dust Box Capacity | 0.35 L |
| Barrier Crossing Ability | 20 mm |
| Dust Box Detection | Supports |
| APP / Remote Control | EZVIZ App Control |
| Wi-Fi Frequency Band | 2.4 GHz |
| Voice Control | Google Assistant & Amazon Alexa |

Robot Accessories

| | |
|---------------------|-------------------------------------|
| Dust Box Filter | Filter Net + High Efficiency Filter |
| Filter Level | E10 |
| Main Brush Type | Floating Main Brush |
| Main Brush Material | Rubber + Bristle |

Specifications CS-RE5P

Accessories Service Life

| Robot Part | Side Brush | Main Brush | High-performance Filter | Mop Cloth |
|-------------------------------|------------|------------|-------------------------|-----------|
| Maintenance Frequency (Week) | 2 | 1 | 1 | - |
| Replacement Frequency (Month) | 6-12 | 6-12 | 3-6 | 3-6 |

Auto-empty Base

| | |
|------------------------------|--------------------|
| Rated Working Voltage | 220-240V~50 / 60Hz |
| Rated Output | DC 24V / 1.5A |
| Auto-empty Suction Power | 28000 Pa |
| Disposable Dust Bag Capacity | 4 L |

General

| | |
|-----------------------|--|
| Product Dimensions | Robot: 345 × 345 × 95 mm (13.58 × 13.58 × 3.74 inch) Auto-empty Base: 220 × 180 × 380 mm (8.66 × 7.09 × 14.96 inch) |
| Packaging Dimensions | 431 × 394 × 347 mm (16.97 × 15.51 × 13.66 inch) |
| Net Weight | Robot: 3.09 kg (109.00 oz) Auto-empty Base: 3.6 kg (126.99 oz) |
| Weight (With package) | 8.84 kg (311.82 oz) |

In the box

- RE5 Plus Robot Vacuum Cleaner ×1
- Auto-empty Base ×1
- Side Brush ×2
- Mop Assembly ×1
- Mop ×1
- Dust Bag ×2
- High Efficiency Filter ×2
- Cleaning Tool ×1
- Quick Start Guide ×2
- Regulatory Information ×1

Certifications

CE-EMC / CE-LVD / CE-RED / ErP / CE-RoHS / REACH SVHC / WEEE /
UKCA / CB / UN38.3

Specifications are subject to change without notice. "EZVIZ" and other trademarks and logos are the properties of EZVIZ in various jurisdictions.